

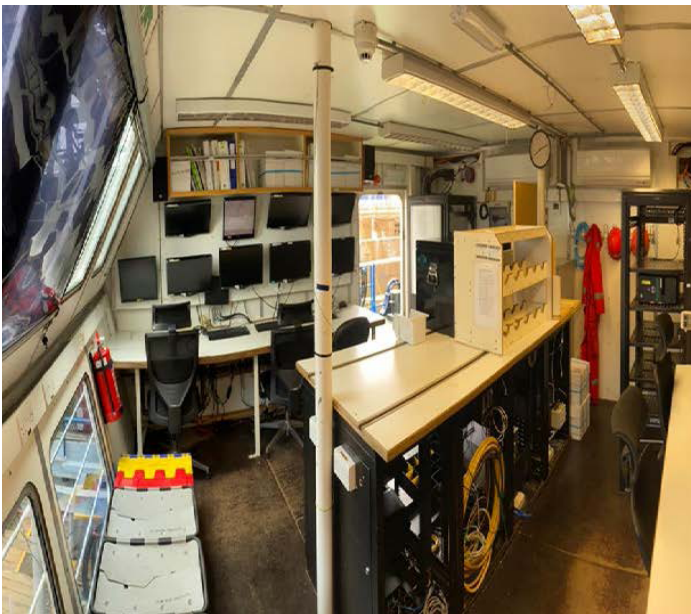


## M.V. Ivero

The M.V. Ivero provides a unique platform for multidisciplinary seabed surveys in the coastal and near shore zone.

**The M.V. Ivero has unique features including accommodation for 22 personnel and a dedicated survey and data processing laboratory, enabling data to be processed and reviewed offshore.**

The vessel also features an 8 tonne a-frame, enabling the vessel to safely operate a range of heavy duty seabed coring and in situ (CPT) equipment. The M.V. Ivero is equipped with bow thrusters, allowing the vessel to hold position without anchoring, resulting in highly productive operations.



---

### KEY BENEFITS

---

- **Highly fuel efficient**
  - **Hydraulically operated 8 tonne a-frame**
  - **Accommodation for 22 personnel**
  - **Large deck working spaces**
  - **Dedicated onboard survey and data processing laboratory**
  - **USBL positioning pole**
-

# Description and Features

## GENERAL SPECIFICATION

<b>Length overall:</b>	34m
<b>Beam:</b>	9m
<b>Max draught:</b>	3.2m
<b>Maximum speed:</b>	10 knots
<b>Fuel capacity:</b>	132m <sup>3</sup>
<b>Water capacity:</b>	122m <sup>3</sup>
<b>Endurance:</b>	28 days
<b>Deck area (aft):</b>	142m <sup>2</sup> , ISO twist locks

## MACHINERY

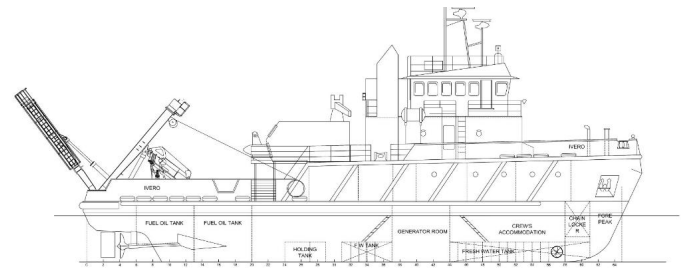
<b>Main engines:</b>	2 x Kelvin TBSC 8, 388kW each
<b>Auxilliary engines:</b>	2 x 85kW, 1 x 275kVA
<b>Bow thrusters:</b>	1 x Transverse 210hp
<b>Deck crane (port):</b>	MOB boat only
<b>Deck crane (stbd):</b>	18t/m
<b>A-frame:</b>	8 tonne SWL, 74m clearance, 4m outreach

## SURVEY INSTRUMENTS

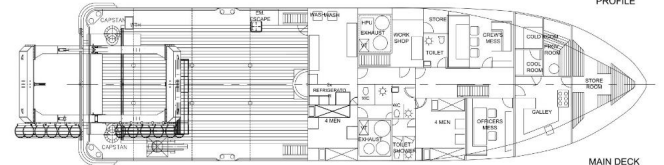
<b>Navigation system:</b>	DGPS OmniSTAR VBS
<b>USBL:</b>	Moon pool available
<b>Gyrocompass:</b>	TSS Meridian

## ACCOMMODATION

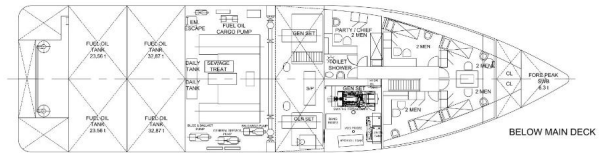
<b>Berths:</b>	22 including crew
<b>Survey lab:</b>	1 x 25m <sup>2</sup>
<b>Workshop:</b>	1 x 12m <sup>2</sup>



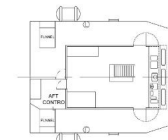
PROFILE



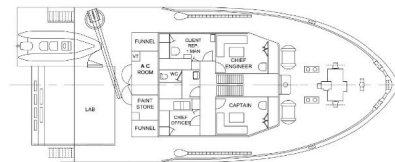
MAIN DECK



BELOW MAIN DECK



WHEELHOUSE DECK



FORECASTLE DECK